

Student guide for foreign students

Comissão de
Cooperação Nacional
e Internacional
- FE USP





The CCInt-FE and the School of Education at USP

The School of Education International Office (CCInt-FE) has been responsible for the coordination of international cooperation activities in this center of research, teaching and extension since 2006.

In this regard, the CCInt-FE has helped students, teachers, as well as the Dean's Office of the School of Education on issues related to the set of actions which make up the process of internationalization of this School.

Once this commitment was made, the CCInt-FE members have been working on finding solutions to issues related to the implementation and maintenance of partnerships and agreements as well as the orientation of students interested in academic activities abroad.



*The March of Human Knowledge -1956
Carlos Magno. Wall Painting
in Block B of the School of Education.*

Index

- 
- 02 – USP – Campus State Capital
 - 06 – USP ifriends
 - 07 – Housing – USP
 - 08 – USP Student Card
 - 10 – School of Education at USP
 - 17 – Language Course (Portuguese)
 - 18 – Know the city of Sao Paulo
 - 21 – Living in Brazil (documents)



University of Sao Paulo



Campus State
Capital



Cultural & Sporting Activities



Currently, the USP has thirty-six Schools of research and teaching : twenty-four of them are located in Sao Paulo, the main campus hosts the Dean's office, a sport recreation center (CEPEUSP, the largest in Latin America), four museums, a university hospital, the University Center "Maria Antonia" among other important specialized departments of the university.



The University of São Paulo also has 42 libraries located in Teaching Schools in various campus. Together, they constitute one of the largest books collections of Brazil, with approximately 7.052.084 units between books, thesis and journals.



The educational complex, a public property of the State of São Paulo, has also a rich set of museums and important art galleries most of them located in the main campus, but also distributed throughout the city of São Paulo.



USP Theater

<http://www.usp.br/tusp/>

USP Cinema “Paulo Emílio” (Cinusp)

<http://www.usp.br/cinusp/>



Symphonic Orchestra (Osusp)

<http://www.usp.br/osusp/>

USP Chamber Orchestra (Ocam)

<http://www.usp.br/ocam/>

USP Coral (Coralusp)

<http://www.usp.br/coralusp/>



Casa de Dona Yayá

<http://www.usp.br/cpc/>

University Center “Maria Antonia”

<http://www.usp.br/mariantonia/>

USP Filarmônica

<http://sites.ffclrp.usp.br/uspfilarmonica/>



Center of Sports Activities of the University of São Paulo (Cepeusp)

<http://www.cepe.usp.br/>



Museum of Human Anatomy
www.icb.usp.br/museu

Museum of Veterinary Anatomy
<http://mav.fmvz.usp.br/>



Museum of Archaeology and Ethnology
<http://www.mae.usp.br>

Museum of Contemporary Art
<http://www.mac.usp.br>

Museum of Science
<http://www.usp.br/mc/>



Museum of Geosciences
<http://www.igc.usp.br/museu>

Paulista Museum
<http://www.mp.usp.br/>

Oceanographic Museum
<http://www.io.usp.br/>



Zoology Museum
<http://www.mz.usp.br/>



USP *iFriends*

USP iFriends is a voluntary program established by the USP International Office with the purpose to integrate foreign students at USP community.

A volunteer undergraduate student (USP iFriend) will choose one international student and will contact her/him.

When someone become your USP Friend, you will receive an email containing the information and contacts from that student for you to start a conversation. After enrolling in the program, also join in our Facebook group USP iFriends.

Activities of the USP Friend:

- Reception at the airport
- Helping in search for accommodation
- Helping in document regularization
- Academic orientation
- Helping with the Portuguese language

If you are an exchange student and want to be part of the program, contact us at ifriends@usp.br or via Facebook.

www.facebook.com/usp.ifriends





Housing USP

USP doesn't offer accommodation for foreign students. So, we have some suggestions:

Temporary:

www.sampahostel.com.br

<http://limetimehostels.com>

<http://girassolhostel.wix.com/hostel>

For the full semester:

<http://casinhadaldis.wixsite.com/home>

<http://studiospiragibe.com.br/home.php>

Groups on Facebook:

Pensionato Antiga Igreja

Pensionato Flor de Pitanga

Repúblicas da USP

Dividir Apê e Classificados USP

BRASIL

re

ÇÃO
ANDRAD
Plásticas
ANITA ATTILIO

USP card facilities

The University Restaurant

The foreign student may buy meal credits with the USP card next to the Central Restaurant, known as "Bandeirão".

Breakfast:

from 7 am to 8.30 am R\$ 0.60.

Lunch:

from 11am to 14:15 - R\$ 1.90

Dinner:

from 17:30 to 19:45 - R\$ 1.90

Address: Rua do Anfiteatro, 295

Phone: 3091 3285

More information:

www.usp.br/coseas/

Student support room – (Pró-aluno room)

Students from USP, including foreigners, can use the Pró-Aluno Room where there are free computers with internet and printers available. Every undergraduate student must register at the Student Section of the School of Education to obtain a password that will allow them access to the computers and the ability to print 50 pages per month.

Student Bus Ticket

After receiving the USP card, the foreign student may request his own ticket to get a 50% discount on the rates of public transport in the city of São Paulo. To purchase this ticket it must have the RNE (National Registry of Foreigners) and the CPF (Individual Registration).

To order your Ticket USP head to the school sector in COSEAS Pass-USP and request your form.

Address: Rua do Anfiteatro, 295 – Cidade Universitária. Phone: 3091 3581.

USP Bus Ticket (BUSP)

Every student has the right to get a USP Bus Ticket. With this card the student can move freely inside the campus and go to the Butantã Metro Station. All international students at USP will receive the BUSP card with no cost.

Wi-Fi (USPnet)

Wireless USPnet project aims to make further progress in the current structure of USPnet in order to provide wireless access network from various points around the campus of USP. To their access USPnet, the student must enter with their USP number and fill out the form on this site:

<http://www.semfiio.usp.br/>

School of Education



Academic
Struture

Courses and Disciplines of FEUSP

FE-USP

The School of Education (FE) offers undergraduate and graduate courses (stricto sensu). The research foci are: culture; organization and education; teaching; teaching theories and school practices; special education; teaching math and science; state, society and education, philosophy of education; history of education and historiography; language and education; psychology and education and sociology of education.

For the undergraduate the FE offers a pedagogy course and pedagogic disciplines to the undergraduate courses from across the University of Sao Paulo.

PEDAGOGIA

The disciplines which composes the curriculum of Pedagogy presents the philosophical, historical, educational and methodological, economical, political and administrative foundations to understanding of school education, its institutions and its social agents. The total workload of the Pedagogy course is 3,300 hours with the ideal duration of 9 semesters and maximum of 18 semesters.

Disciplines:

Mandatory: www.fe.usp.br/wp-content/uploads/obrigatorias.pdf

Optional: www.fe.usp.br/wp-content/uploads/optativas-2.pdf

Optional: www.fe.usp.br/wp-content/uploads/optativas.pdf

TEACHING DEGREE

For the Teaching Degree, the FE offers disciplines organized into three blocks:

Introduction to Educational Studies

Theoretical Foundations of Education

Teaching methods of:

Portuguese, French, English, German, Latin, Oriental Languages, Italian, Spanish, Greek, History, Social Sciences, Geography, Philosophy, Physics, Mathematics, Psychology, Chemistry, Biological Sciences, Physical Education, Geology, Linguistics and Geosciences and Environmental Education.

The classes are taught in Portuguese, except for the teaching degree course in French, English and Spanish that are taught in these respective languages.

Disciplines:

www.fe.usp.br/wp-content/uploads/lic.pdf

A photograph of a modern building with a large glass facade and a prominent orange-colored upper section. A person is walking in the foreground, and a large tree is partially obscuring the view of the building.



Centers, Groups and Research Laboratories of the FEUSP

The School of Education currently offers undergraduate and graduate courses(stricto sensu) as well as different forms of research and university extension projects.

There are at least 17 research laboratories and 4 study centers that are dedicated to topics such as: Pedagogical Materials, Teaching of Sciences Education, Reading and Creative Expression, Teaching of Chemistry and Educational Technologies, Art-Education & Culture, Policy and Scholar Administration, etc.





Laboratory of Toys and Pedagogical Materials - LABRIMP

www.labrimp.fe.usp.br/

Laboratory of Biological Sciences Teaching

<http://www3.fe.usp.br/secoes/inst/novo/laboratorios/bio.asp>

Laboratory of Reading and Creative Expression - LALEC

www2.fe.usp.br/~lalec/

Laboratory of Research in Chemistry Teaching and Educational Technologies - LAPEQ

www.lapeq.fe.usp.br/

Laboratory of Mathematics – LABMAT

www2.fe.usp.br/~labmat/

Laboratory of Teaching and Physics Research – LAPEF

www.lapef.fe.usp.br/

Didactic Laboratory of Special Education – LADESP

www.fe.usp.br

Museum of Education and Toy - MEB

www.meb.fe.usp.br

Center for Studies and Research in Public Education Policies - CEPPPE

www.fe.usp.br

Find out more about Groups and Laboratories at:

www.fe.usp.br



Services and FE- USP Information



Over the years, the School of Education has focused on offering technology and information to its students through its offices such as: the CCIInt -FE, which assists students interested in participating in the internationalization process; the Culture and Extension Committee, which focuses on organizing courses and events; CEPEL which teaches language course; and the Student Division, where the student can find information on undergraduate and graduate courses and spaces designed to support and complement the research and the training of its own students.

The FEUSP currently has a library, a computer room with internet, printers and scanners (Pró-Aluno Room); a Copy Machine Store, and Wi-Fi (USPNet and Eduroam) available throughout the campus.



CEPEL (Center of Studies and Research in the Teaching of Languages)

Taught by teachers hired by the School of Education at USP, the short courses "minicursos" of CEPEL languages are offered free of charge, including the service of Portuguese language to foreign students. They are coordinated and supervised by a team of teachers who specialize in the methodology of teaching language. CEPEL offers linguistic Portuguese Language Tutoring in Room 11 - Block B.

inco@fe.usp.br



The **INCO** program has for over twenty years offered free English courses for USP undergraduate students. In all, six levels are offered that lead the student level A1 to level B1 according to the Common European Framework Reference table.



Interdepartamental Language Center

Interdepartamental Language Center of the School of Philosophy, Language and Literature and Human Sciences (FFLCH) also offers paid Portuguese courses for foreigners (taught by specialized teachers) which cost R\$ 129,60 (2016). This Language Centre has increasingly expanded its educational proposal and currently offers several language courses.

www.clinguas.fflch.usp.br

*Get to know
the city of
Sao Paulo*



Mobility
and Tourism



Tourism & Culture in São Paulo

São Paulo is global city with a population of about 12 million citizens, 70 nationalities and more than 15 million tourists annually.

Diverse and plural, the city is generating trends and styles with options for leisure, business and entertainment to the most diverse lifestyles and behavior: intellectuals, athletes, religious, businesspersons, artists, etc.

Faced with the enormous range of cultural and tourist facilities, we selected information that can help foreign students interested in exploring and experiencing the city of Sao Paulo.

Get to know the city of São Paulo

www.cidadedesapaulo.com

Turism in Sao Paulo

www.turismoemsaopaulo.com

Sesc Turism

www.sescsp.org.br/turismo



*Einstein riding a bicycle.
Eduardo Cobra. Wall Painting*

Transports in Sao Paulo

Single Ticket

SPTRANS Single Ticket (Transport in São Paulo) you will pay R\$ 5.45 to travel between subway/metro, train and bus (with this amount charged on the ticket you can take the bus 4 times and one for subway or train within 3 hours).

Bus

About 15,000 buses serve the city: more than 70 % are accessible. There are also intercity buses with different rates. The São Paulo Metro subway operates everyday.

Subway

The São Paulo Subway operates from Monday to Monday, including holidays, and serves a great part of the city.

Learn more about it at:

www.metro.sp.gov.br

www.emtu.sp.gov.br

www.sptrans.com.br

BUS Station

There are three BUS Station in São Paulo. All of them have easy access via bus and subway. More information at:

www.socicam.com.br

Bicycle

Sao Paulo is increasingly easy to get around by bicycle, as the city has expanded its cycling structure. You can rent a bike in one of the 164 public stations. Learn how to rent a bike at:

www.bikesampa.com.br

www.ciclosampa.com.br

Trains

Known as CPTM (the Metropolitan Train Company), it connects São Paulo to 30 cities in the surrounding area. The rate per trip is R\$ 3.50 and is integrated with the subway/metro. More information:

www.cptm.sp.gov.br

Taxis

Taxis in São Paulo are identified as white vehicles. A panel in red in the car indicates the amount to be paid for each trip. This site calculates the probably tax:

www.tarifadetaxi.com/sao-paulo

Guarulhos Airport

Aiport Bus Service:

From Tatuapé Metro or Barra Funda Metro to Guarulhos Airport

www.emtu.sp.gov.br

Rates: from R\$ 5,55 to 45,50

Stay in Brazil



Documents



Documents required to foreign students

BRAZILIAN VISA FOR STUDENT

The interested student must make the visa request in the Brazilian embassies or consulates abroad before their arrival in Brazil. Find the Brazilian consulate in your country at the Itamaraty site:

www.portalconsular.mre.gov.br

CPF

The Registration of Individuals is a mandatory document for the foreign student to open a bank account or to apply for the student bus ticket (with 50% discount on tickets). This document may be requested in Brazilian embassies or consulates, which is the fastest. For requesting it, access the site below, fulfill the formulary on and deliver it in the designated places:

<http://www.receita.fazenda.gov.br/Aplicacoes/Atcta/>

[CpfEstrangeiro/fcpf.asp](http://www.receita.fazenda.gov.br/Aplicacoes/Atcta/CpfEstrangeiro/fcpf.asp)

If you want to request the CPF in Brazil, you need to pay an issuance which costs R\$ 5.70. Go to the indicated banks (Banco do Brasil or Caixa Econômica Federal) and fill out the form for acquiring the document. After this, go to the closest Receita Federal with the necessary documents. For this procedure, find more information on the site below:

<http://idg.receita.fazenda.gov.br/contato/unidades-de-atendimento/sao-paulo>

<https://www.receita.fazenda.gov.br/Aplicacoes/ssl/ATCTA/CPF/InscricaoPublica/inscricao.asp>



Documents required to foreign students

RNE

The National Registry of Foreigners is a mandatory document for foreign students in Brazil. After arriving in Sao Paulo, the foreign student must go to the Federal Police to obtain the document. The deadline is 30 days after entering the country. The student must schedule a visit and pay two rates. The total is R\$ 309,22. Find more information on Federal Police site:

<http://www.pf.gov.br/servicos-pf/estrangeiro/registro-e-emissao-renovacao-de-cedula-de-identidade-de-estrangeiro>

For requesting the RNE, you must have:

- 1)** Valid Travel Document, original and a certified copy;
- 2)** Consular Visa and the original formulary of the visa application;
- 3)** Two recent 3x4 photos in color with a white background;
- 4)** Proof of payment of the following fees:
 - CARTEIRA DE ESTRANGEIRO PRIMEIRA VIA: R\$ 204,77 (Código 140120);
 - REGISTRO DE ESTRANGEIROS / REESTABELECIMENTO DE REGISTRO: R\$ 106,45 (Código 140082).

Follow the instructions, fill out the form, print the bank slip, pay the both fees and schedule a visit at the closer Federal Police. At the scheduled day, bring the solicited documentation.

Closest Federal Police: Rua Hugo Dantola, 95 - Lapa de Baixo, São Paulo - SP, 05038-090

ÍNDICE DE/AS

- A. Av. da Universidade
B. Av. Prof. Lineu Prestes
C. Av. Prof. Luciano Guaberto
D. Av. Prof. Ernesto de M. Leme
E. Av. Prof. Almeida Prado
F. Av. Prof. Melo Moraes
G. Rua do Infleto
H. Av. da Retoria
I. Av. Prof. Lúcio Rodrigues
J. Rua do Lago
K. Rua do Matão
L. Av. Corifeu de Azevedo Marques
M. Av. Escola Politécnica
N. Av. Marginal Pinheiros
O. Rua Veneza
P. Rua Francisco dos Santos

Cidade Universitária - Capital



Mapa do Transporte Metropolitano

Metropolitan Transport Network



Legenda Legend

	Linha 1 - Azul Line 1-Blue	METRÔ
	Linha 2 - Verde Line 2-Green	METRÔ
	Linha 3 - Vermelha Line 3-Red	METRÔ
	Linha 4 - Amarela Line 4-Yellow	VIAQUATRO
	Linha 5 - Lilás Line 5-Lilac	METRÔ
	Linha 7 - Rubi Line 7-Ruby	CPTM
	Linha 8 - Diamante Line 8-Diamond	CPTM
	Linha 9 - Esmeralda Line 9-Emerald	CPTM
	Linha 10 - Turquesa Line 10-Turquoise	CPTM
	Linha 11 - Coral Line 11-Coral	CPTM
	Linha 11 - Coral - Expresso Leste Line 11-Coral - East Express	CPTM
	Linha 12 - Safira Line 12-Sapphire	CPTM
	Linha de Ônibus Especial Special Bus Line	CPTM
	Expresso Turístico Touristic Express	CPTM
	Ponte ORCA - tarifada Orca Shuttle Service	EMTU
	Corredor Metropolitano de Ônibus ABD ABD Metropolitan Bus Corridor	EMTU
	Terminal Metropolitano de Ônibus Metropolitan Bus Terminal	

	Estação Station
	Integração - gratuita Integration - Free Interchange
	Integração - tarifada Integration - Paid Interchange
	Integração - gratuita: Horário Especial (veja no site: METRÔ/CPTM) Integration - Free Interchange during off-peak hours (see website: METRÔ/CPTM)
	Estações com elevador Station with elevator
	Terminal Rodoviário Road Terminal
	Bicicletário Bike Parking Terminal
	Paraciclos Bike Attaching Post
	Bicicletário com empréstimo de bicicleta Bike Parking & Rental Terminal
	Estacionamento de Carro Integrado Integrated Car Parking
	Estacionamento de Carro Integrado/ Paraciclos Integrated Car Parking/ Bike Attaching Post

Informações úteis Useful Information

CPTM	www.cptm.sp.gov.br	0800 055 0121
EMTU	www.emtu.sp.gov.br	0800 724 0555
METRÔ	www.metro.sp.gov.br	0800 770 7722
VIAQUATRO	www.viaquatro.com.br	0800 770 7100

Consulte no site das empresas os horários de funcionamento das estações e transferências entre linhas.
Please address the websites of the metropolitan transport companies for stations service hours and line interchange information.



GOVERNO DO ESTADO DE SÃO PAULO

Secretaria dos Transportes
Metropolitanos



CCInt-FE:

Prof. Dr. Valdir Heitor Barzotto
Coordinator

Profa. Dra. Leny Magalhães Mrech
Vice-Coordinator

Prof. Dr. Marcos Ferreira Santos
Prof. Dr. Nelson Schapochnik
Gabriela Hizume
Members

Vanessa de Lima Carvalho
Assistant

Cindy Evellyn de Araújo Silva
Trainee



(11) 3091.2067



ccint.fe@usp.br



[ccint.feusp](https://www.facebook.com/ccint.feusp)



Mon to Fri: 9AM-12 and 2PM-6



www.usp.br/internationaloffice/



Block B - Room 21



www.fe.usp.br

Av. da Universidade, 308 - Cidade Universitária
Cep.: 05508-040 - São Paulo/SP

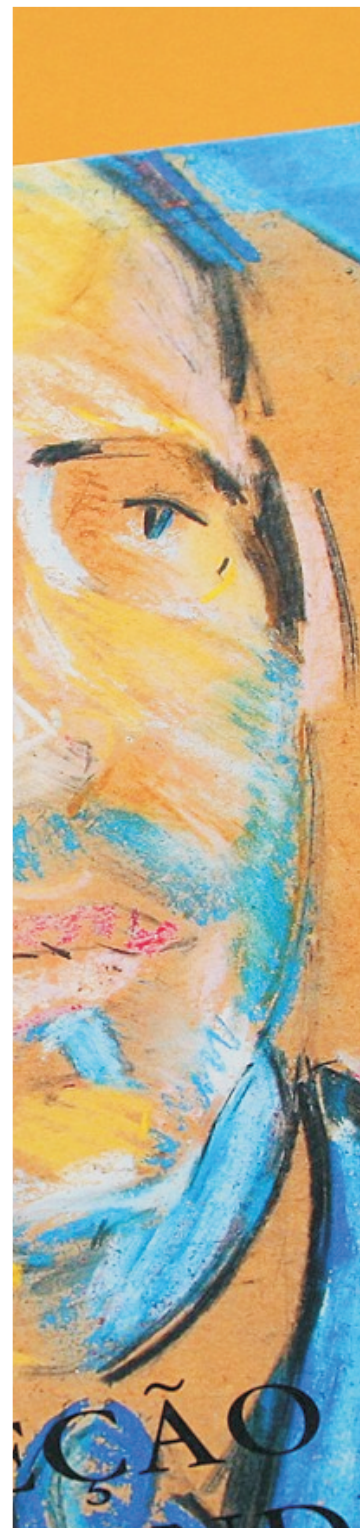
Credits



Design and Conception
www.paivajunior.com

Photosl Images USP
Marcos Santos

English Version
Vanessa de Lima Carvalho
Cindy Evellyn de A. Silva




 Comissão de
 Cooperação Nacional
 e Internacional
FE USP

