

Student guide for foreign students

Comissão de
Cooperação Nacional
e Internacional

FE USP



A stylized illustration of a figure in a white, hooded garment, possibly a ghost or a person in a protective suit, set against a blue background. The figure's face is obscured by the hood, and their hands are visible at the bottom right, one holding a red object.

Once made this commitment, the CCIntFE members have been working on finding solutions to the problems related to the implementation and maintenance of cooperation agreements as well as the orientation of students interested in academic activities abroad.



*The March of Human Knowledge -1956
Carlos Magno. Wall Painting
in Block B of the School of Education.*

Index

- 
- 02 – USP – Campus State Capital
 - 06 – USP ifriends
 - 07 – Info Housing – USP
 - 08 – USP Student Card
 - 10 – School of Education at USP
 - 16 – Language Course (Portuguese)
 - 17 – Know the city of Sao Paulo
 - 20 – Living in Brazil (documents)



University of Sao Paulo



Campus State
Capital



Cultural & Sporting Activities



Currently USP has thirty-six Schools of research and teaching : twenty-four of them are located in Sao Paulo, a city which are the Dean's office, a center for sports (CEPEUSP, the largest in Latin America), four museums, a hospital (Universitary Hospital - HU), the Universitary Center "Maria Antonia" among other important specialized organs of the university.

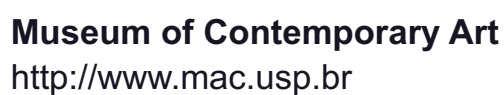
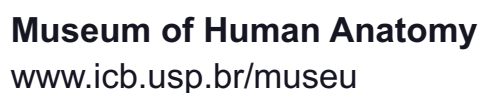


The University of São Paulo also consists of 42 libraries located in the Teaching Schools in various campi. Together, they form one of the major collections librarians of Brazil, with approximately 7.052.084 units between books, thesis and journal.



The educational complex, public property of the State of São Paulo, has also a rich set of museums and important art galleries, most located in the central campus, but also distributed throughout the city of São Paulo.





Museum of Science
<http://www.usp.br/mc/>

Museum of Geosciences
<http://www.igc.usp.br/museu>

Paulista Museum
<http://www.mp.usp.br/>

Oceanographic Museum
<http://www.io.usp.br/>

Zoology Museum
<http://www.mz.usp.br/>







Info Housing USP

The Info Housing Service aims to disseminate housing opportunities or accommodation to foreign students who exchange at USP during their period in Sao Paulo .

This service has been designed with as assumptions two central issues: the lack of accommodation for the entire student demand at USP and the difficulty of the foreign lend properly in the country (by not getting the required minimum documentation, in addition to the usual requirements of real estate).

For more information about housing or accommodation contact directly the e- mail:

infohousing@usp.br

Other suggestions:

www.sampahostel.com.br

<http://limetimehostels.com>

<http://girassolhostel.wix.com/hostel>

<http://studiospiragibe.com.br/home.php>

Flor de Pitanga Hostel (Facebook)

A close-up photograph of a book cover. The cover features a large, abstract, and expressive portrait of a man with a beard, rendered in a style reminiscent of modernist or expressionist art. The colors used are primarily blue, yellow, and orange, with some white and pinkish tones. The man's face is the central focus, with his eyes looking slightly to the left. The background of the portrait is a mix of these colors, creating a textured, layered effect. At the bottom of the cover, the text 'EXPOSIÇÃO ANDRAD' is visible in a bold, black, sans-serif font. Below this, the word 'Plásticas' is written in a smaller, italicized font. The book is resting on a surface that appears to be a table or desk, with some other papers or books visible in the background.

USP card facilities

The University Restaurant

The foreign student may buy meals credits with your USP card next to the Central Restaurant, known as "Bandeirão".

Breakfast:

from 7 am to 8.30 am R\$ 0.60.

Lunch:

from 11am to 14:15 - R\$ 1.90

Dinner:

from 17:30 to 19:45 - R\$ 1.90

Address: Rua do Anfiteatro, 295

Phone: 3091 3285

More information:

www.usp.br/coseas/

Student suport room – (Pro-aluno room)

Students from USP, including foreigners, can use at Pró-Aluno Room where there are available for free computers with internet and printers. Every undergraduate student must register at Student Section of the School of Education to obtain a password that will allow they access the computers.

Student Bus Ticket

After receiving the USP card, the foreign student may request his own ticket to get 50% discount on the rates of public transport in the city of São Paulo. To purchase this ticket it must have the RNE (National Registry of Foreigners) and the CPF (Individual Registration).

To order your Ticket USP head to the school sector in COSEAS Pass-USP and request your form.

Address: Rua do Anfiteatro, 295 – Cidade Universitária. Phone: 3091 3581.

USP Bus Ticket (BUSP)

Every student has the right to get USP Bus Ticket. With this card the student can move freely inside the campus and go to the Butantã Metro Station. All international students at USP will receive the BUSP card with no cost.

Wi-Fi (USPnet)

Wireless USPnet project aims to make further progress in the current structure of USPnet in order to provide wireless access network from various points around the campus of USP. Firstly, to access the student just enter with your USP number on the website by a computer

www.vpn.usp.br



School of Education



Academic
Struture

Courses and Disciplines of FEUSP

FE-USP

The School of Education (FE) offers undergraduate and graduate courses (stricto sensu). The research modalities are: culture, organization and education, teaching, teaching theories and school practices, special education, teaching math and science, state, society and education, philosophy of education, history of education and historiography, language and education, psychology and education and sociology of education.

For the undergraduate the FE offers Pedagogy course and pedagogic disciplines to the undergraduate courses from across the University of Sao Paulo.

PEDAGOGIA

The disciplines which composes the curriculum of Pedagogy presents the philosophical, historical, educational and methodological, economical, political and administrative foundations to understanding of school education, its institutions and its social agents. The total workload of the Pedagogy course is 3,300 hours with ideal duration of 9 semesters and maximum of 18 semesters.

Disciplines:

Mandatory: www.fe.usp.br/wp-content/uploads/obrigatorias.pdf

Optional: www.fe.usp.br/wp-content/uploads/optativas-2.pdf

Optional: www.fe.usp.br/wp-content/uploads/optativas.pdf

TEACHING DEGREE

For the Teaching Degree, the FE offers disciplines organized into three blocks:

Introduction to Educational Studies

Theoretical Foundations of Education

Teaching methods of:

Portuguese, French, English, German, Latin, Oriental Languages, Italian, Spanish, Greek, History, Social Sciences, Geography, Philosophy, Physics, Mathematics, Psychology, Chemistry, Biological Sciences, Physical Education, Geology, Linguistics and Geosciences and Environmental Education [one discipline by subject].

The classes are taught in Portuguese, except for class teaching degree course in French, English and Spanish that are taught in these respective languages.

Disciplines:

www.fe.usp.br/wp-content/uploads/lic.pdf



Centers, Groups and Research Laboratories of the FEUSP

The School of Education currently offers undergraduate and graduate courses(stricto sensu) as well as different forms of research and university extension projects.

Currently the students from FE have at least 17 research laboratories and 04 study centers that are dedicated to topics such as: Pedagogical Materials, Teaching of Sciences Education, Reading and Creative Expression, Teaching of Chemistry and Educational Technologies, Art-Education & Culture, Policy and Scholar Administration, etc.





Group of Teaching and Research in Teaching Geography

www.geped.fe.usp.br/

Group of Integrated Studies Contexts of Childhood Education

www.labrimp.fe.usp.br/contextos/

Group of No Formal No Education Study and Dissemination of Science

www.geenf.fe.usp.br/v2/

Group of Gender Studies, Education and Sexual Culture

www2.fe.usp.br/~ariadne/

Group of Studies History of Education and Religion

www.geher.fe.usp.br/

Group of Studies and Research in Mathematics Education and Education

www2.fe.usp.br/~gepeme/www.gepeme.fe.usp.br/Gepeme.html

Group of Study and Research in Ethnomatematics - GEPEm

www2.fe.usp.br/~etnomat/

Group of Studies and Production Writing Research and Psychoanalysis

<http://paje.fe.usp.br/~geppe/>

Group of Studies and Research on Educator Training

www2.fe.usp.br/~gepefe/

Integrated Laboratories for Content Production and Dissemination and Educational practices - LABEDUC

[/www.labeduc.fe.usp.br](http://www.labeduc.fe.usp.br)





Laboratory of Toys and Pedagogical Materials - LABRIMP

www.labrimp.fe.usp.br/

Laboratory of Biological Sciences Teaching

<http://www3.fe.usp.br/secoes/inst/novo/laboratorios/bio.asp>

Laboratory of Reading and Creative Expression - LALEC

www2.fe.usp.br/~lalec/

Laboratory of Research in Chemistry Teaching and Educational Technologies - LAPEQ

www.lapeq.fe.usp.br/

Laboratory of Mathematics – LABMAT

www2.fe.usp.br/~labmat/

Laboratory of Teaching and Physics Research – LAPEF

www.lapef.fe.usp.br/

Didactic Laboratory of Special Education – LADESP

www.fe.usp.br

Museum of Education and Toy - MEB

www.meb.fe.usp.br

Center for Studies and Research in Public Education Policies - CEPPPE

www.fe.usp.br

Know more Groups and Laboratories at:

www.fe.usp.br



Services and FE- USP Information



The School of Education, over the years, which the focus is offer technology, qualified information through its offices to the students (as CCInt -FE, which assists students interested in participating in the internationalization process); Culture and Extension Committee, which focus is in organizing courses and events; CEPEL wthat teaches language course; Student Division, where the student can find information on undergraduate and graduate courses and spaces designed to support and complement the research and the training of its own students.

The FEUSP currently has a library, a computer room with computers, internet, printers and scanners equipped (Pró-Aluno Room); Copy Machine Store, and Wi-Fi (USPNet and Eduroam) available in all School environments.



CEPEL (Center of Studies and Reseach in the Teaching of Languages)

Taught by teachers hired by the School of Education at USP , the short courses "minicursos" of CEPEL languages offered free of charge , including the service of Portuguese language to foreign students, they are coordinated and supervised by a team of teachers Methodology of languages teaching. CEPEL offers linguistic Portuguese Language Tutoring (Room 11 - Block B).

inco@fe.usp.br

www.fe.usp.br/cepe



The **INCO** program has for over twenty years free English courses for USP undergraduate students. In all, six levels are offered that lead the student level A1 to level B1 according to the Common European Framework Reference table.



Interdepartamental Language Center

Interdepartamental Language Center of the School of Philosophy, Language and Literature and Human Sciences (FFLCH) also offers paid courses of Portuguese for foreigners (taught by specialized teachers). This Language Centre has increasingly expanded its educational proposal and currently offers several language courses. www.clinguas.fflch.usp.br

*Get to know
the city of
Sao Paulo*



Mobility
and Tourism



Tourism & Culture in São Paulo

Currently with a population about 12 million citizens, 70 nationalities and more than 15 million tourists annually, São Paulo is a global city.

Diverse and plural, the city is generating trends and styles with options for leisure, business and entertainment to the most diverse lifestyles and behavior: intellectuals, athletes, religious, businesspersons, artists, etc.

Faced with the enormous range of cultural and tourist facilities, we selected some of channels of information that can help foreign students interested in exploring and experiencing the city of Sao Paulo.

Get to know the city of São Paulo

www.cidadedesapaulo.com

Turism in Sao Paulo

www.turismoemsaopaulo.com

Sesc Turism

www.sescsp.org.br/turismo



*Einstein riding a bicycle.
Eduardo Cobra. Wall Painting*

Transports in Sao Paulo

Single Ticket

Single Ticket of SPTRANS (Transport in São Paulo) you will pay R \$ 5.45 to travel between subway/metro, train and bus (with this amount charged on the ticket you can take bus 4 times and one for subway or train in 3 hours).

Bus

About 15,000 buses serve the city: more than 70 % are accessible for many of them running through corridors (exclusive for bus). There are also intercity buses with different rates. The São Paulo Metro subway operates everyday.

Subway

The São Paulo Subway operates from Monday to Monday, including holidays, and serves a great part of the city.

Learn more about it at:

www.metro.sp.gov.br

www.emtu.sp.gov.br

www.sptrans.com.br

BUS Station

There are three BUS Station in São Paulo. They all have easy access via bus and subway. More information at:

www.socicam.com.br

Bicycle

Sao Paulo is increasingly easy to get around by bicycle, as the city has expanded its cycling structure. You can rent a bike in one of the 164 public stations. Learn how to rent a bike at:

www.bikesampa.com.br

www.ciclosampa.com.br

Trains

Known as CPTM train (the Metropolitan Trains Company) connects São Paulo to 30 cities surroundings area. The rate per trip is R\$ 3.50 and is integrated with the subway/metro.

More information

www.cptm.sp.gov.br

Taxis

Taxis in São Paulo are identified as white vehicles. A panel in red in the car indicates the amount to be paid by rate each trip.

www.tarifadetaxi.com/sao-paulo

Guarulhos Airport

Aiport Bus Service:

From Tatuapé Metro or Barra Funda Metro to Guarulhos Airport

www.emtu.sp.gov.br

Rates: from R\$ 5,55 to 45,50



Stay in Brazil



Documents



Documents required to foreign students

BRAZILIAN VISA FOR STUDENT

The interested student must make the visa request in the Brazilian embassies or consulates abroad before their arrival in Brazil. Find the Brazilian consulate in your country at the Itamaraty site:

www.portalconsular.mre.gov.br

RNE

The National Registry of Foreigners is a mandatory document for foreign students in the country. After arriving in Sao Paulo, the foreign student must go to the Federal Police to reach the issue of the document (Deadline: 30 days after entering the country).

The student must schedule a visit and pay two rates. The total is R\$ 309,22.

CPF

The Registration of Individuals is a mandatory document for the foreign student to open a bank account or to apply for the student bus ticket (with 50% discount on tickets). The issuance of the document costs R\$ 5.70. Find more information at the website:

<http://idg.receita.fazenda.gov.br>

ÍNDICE DE VIAS

- A. Av. da Universidade
B. Av. Prof. Lineu Prestes
C. Av. Prof. Luciano Guaberto
D. Av. Prof. Ernesto de M. Leme
E. Av. Prof. Almeida Prado
F. Av. Prof. Melo Moraes
G. Rua do Infleatiro
H. Av. da Retoria
I. Av. Prof. Lúcio M. Rodrigues
J. Rua do Lago
K. Rua do Matão
L. Av. Corifeu de Azevedo Marques
M. Av. Escola Politécnica
N. Av. Marginal Pinheiros
O. Rua Vavreanga
P. Rua Francisco dos Santos

Cidade Universitária - Capital



LEGENDA

- Áreas verdes
- Canteiros
- Corpos d'água
- Curso d'água
- Construções
- Campo de Futebol
- Quatras Esportivas
- Piscinas
- Áreas externas ao Campus
- Áreas internas ao Campus não pertencentes à USP
- Rua, Avenidas e Pátios
- Instituições internas ou adjacentes ao Campus
- Instituições não-pertencentes à USP

Escala 1:20.000

Escala definida para o formato A4.

0 202 m



ÍNDICE DE UNIDADES DE REALIZAÇÃO

01. Fundação Universitária para o Vestibular - FUVEST
02. Centro de Visitantes
03. Escola de Educação Física e Esporte - EEF
04. Faculdade de Educação - FE
05. Escola de Aplicação da Faculdade de Educação
06. Centro de Práticas Esportivas - CEPEUSP
07. Rectoria e Coordenadoria de Administração Geral - CODAGE
08. Museu de Arte Contemporânea - MAC
09. Conjunto Residencial da USP (RSP) e Coordenadoria de Assistência Social (COSEAS)
10. POLAM, PROCAM e CINUSP
11. Instituto de Estudos Brasileiros - IEB
12. Praça do Relógio
13. Edifício de Engenharia Relativa: Coordenadoria de Comunicação Social - CCSEditora da USP (EDUS) Agência USP de Treinamento, Instituto de Estudos Avançados (IEA) Sistema Integrado de Bibliotecas (SIB) Escola de Comunicação e Artes (ECA)
14. Escola de Comunicação e Artes - ECA
15. Instituto de Patologia - IP
16. CEPEUSP e Olimpíada
17. Praça dos Bancos
18. Faculdade de Economia e Administração - FEA
19. Barracões - ECA e FMVZ
20. Escola Politécnica - POLI
21. Instituto de Eletrotécnica e Energia - IEE
22. Instituto de Astronomia e Geofísica - AG
23. Instituto de Matemática e Estatística - IME
24. Faculdade de Arquitetura e Urbanismo - FAU
25. Clube dos Funcionários
26. Instituto Oceanográfico - IO
27. Instituto de Física - IF
28. Prefeitura do Campus da Capital - PCO
29. Museu de Arqueologia e Etnologia - MAE
30. Grêmios dos Funcionários da USP
31. Hospital Universitário - HU
32. Instituto de Ciências Biomédicas - ICB III
33. Faculdade de Odontologia - FO
34. Faculdade de Medicina - FM Fonoaudiologia, Fisiatria e Terapia Ocupacional - FOTIO
35. Faculdade de Medicina Veterinária e Zootecnia - FMVZ
36. Instituto de Biociências - ICB II e IV
37. Instituto de Biologia - IB
38. Clube dos Professores
39. Administração da FECH
40. Instituto de Geociências - IG
41. Instituto de Química - IQ
42. Faculdade de Ciências Farmacêuticas - FCF
43. Faculdade de Filosofia, Letras e Ciências Humanas - FFH
44. Casa da Cultura Japonesa
45. Núcleo de Recreação Infantil - NURI
46. Anfiteatro Camargo Guarnieri
47. Centro de Computação Eletrônica - CCE
48. Arquivo Geral da USP

Mapa do Transporte Metropolitano

Metropolitan Transport Network



Legenda Legend

	Linha 1 - Azul <i>Line 1-Blue</i>	METRÔ
	Linha 2 - Verde <i>Line 2-Green</i>	METRÔ
	Linha 3 - Vermelha <i>Line 3-Red</i>	METRÔ
	Linha 4 - Amarela <i>Line 4-Yellow</i>	VIAQUATRO
	Linha 5 - Lilás <i>Line 5-Lilac</i>	METRÔ
	Linha 7 - Rubi <i>Line 7-Ruby</i>	CPTM
	Linha 8 - Diamante <i>Line 8-Diamond</i>	CPTM
	Linha 9 - Esmeralda <i>Line 9-Emerald</i>	CPTM
	Linha 10 - Turquesa <i>Line 10-Turquoise</i>	CPTM
	Linha 11 - Coral <i>Line 11-Coral</i>	CPTM
	Linha 11 - Coral - Expresso Leste <i>Line 11-Coral - East Express</i>	CPTM
	Linha 12 - Safira <i>Line 12-Sapphire</i>	CPTM
	Linha de Ônibus Especial <i>Special Bus Line</i>	CPTM
	Expresso Turístico <i>Touristic Express</i>	CPTM
	Ponte ORCA - tarifada <i>Orca Shuttle Service</i>	EMTU
	Corredor Metropolitano de Ônibus ABD <i>ABD Metropolitan Bus Corridor</i>	EMTU
	Terminal Metropolitano de Ônibus <i>Metropolitan Bus Terminal</i>	

	Estação <i>Station</i>
	Integração - gratuita <i>Integration - Free Interchange</i>
	Integração - tarifada <i>Integration - Paid Interchange</i>
	Integração - gratuita: Horário Especial (veja no site: METRÔ/CPTM) <i>Integration - Free Interchange during off-peak hours (see website: METRÔ/CPTM)</i>
	Estações com elevador <i>Station with elevator</i>
	Terminal Rodoviário <i>Road Terminal</i>
	Bicicletário <i>Bike Parking Terminal</i>
	Paraciclos <i>Bike Attaching Post</i>
	Bicicletário com empréstimo de bicicleta <i>Bike Parking & Rental Terminal</i>
	Estacionamento de Carro Integrado <i>Integrated Car Parking</i>
	Estacionamento de Carro Integrado/ Paraciclos <i>Integrated Car Parking/ Bike Attaching Post</i>

Informações úteis Useful Information

CPTM	www.cptm.sp.gov.br	0800 055 0121
EMTU	www.emtu.sp.gov.br	0800 724 0555
METRÔ	www.metro.sp.gov.br	0800 770 7722
VIAQUATRO	www.viaquatro.com.br	0800 770 7100

Consulte no site das empresas os horários de funcionamento das estações e transferências entre linhas.
Please address the websites of the metropolitan transport companies for stations service hours and line interchange information.



GOVERNO DO ESTADO DE SÃO PAULO

Secretaria dos Transportes
Metropolitanos



CCInt-FE:

Prof. Dr. Valdir Heitor Barzotto
Coordinator

Profa. Dra. Leny Magalhães Mrech
Vice-Coordinator

Prof. Dr. Marcos Ferreira Santos
Prof. Dr. Nelson Schapochnik
Sthefane Lara Calazans Santana
Members

Vanessa de Lima Carvalho
Assistant

Cindy Evellyn de Araújo Silva
Sthefane Lara Calazans Santana
Lair de Paiva Junior
Trainee



(11) 3091.2067



ccint.fe@usp.br



[ccint.feusp](https://www.facebook.com/ccint.feusp)



Mon to Fri: 9AM-12 and 2PM-6



www.usp.br/internationaloffice/



Block B - Room 21



www.fe.usp.br

Av. da Universidade, 308 - Cidade Universitária
Cep.: 05508-040 - São Paulo/SP

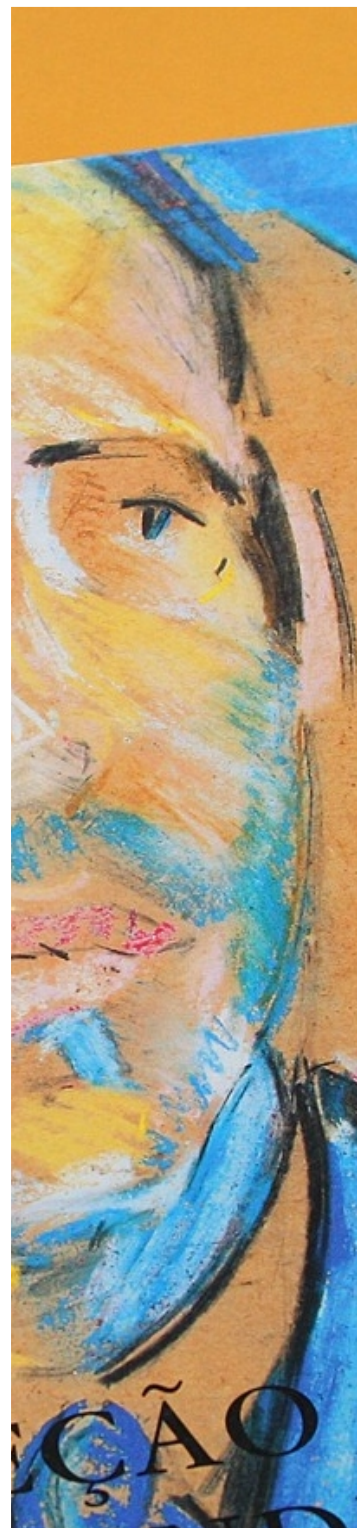
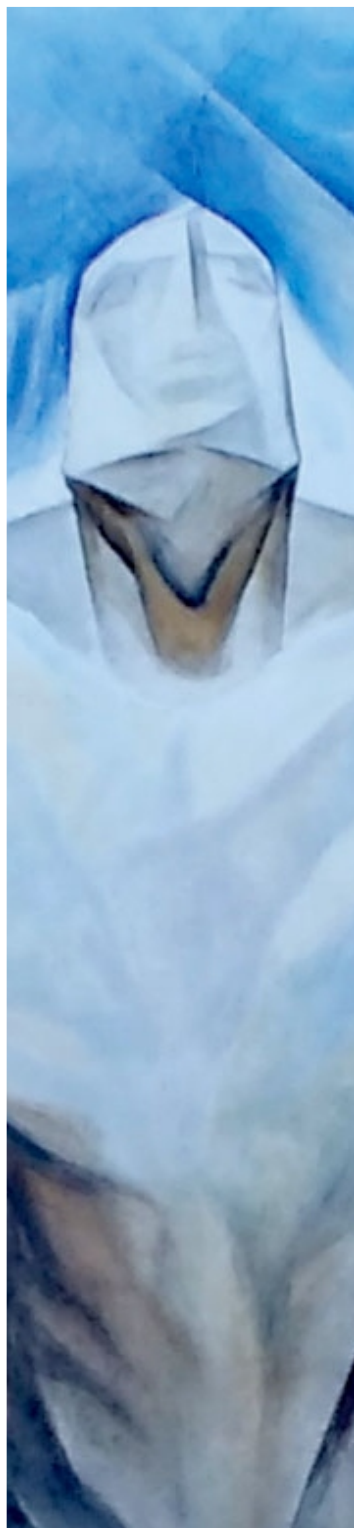
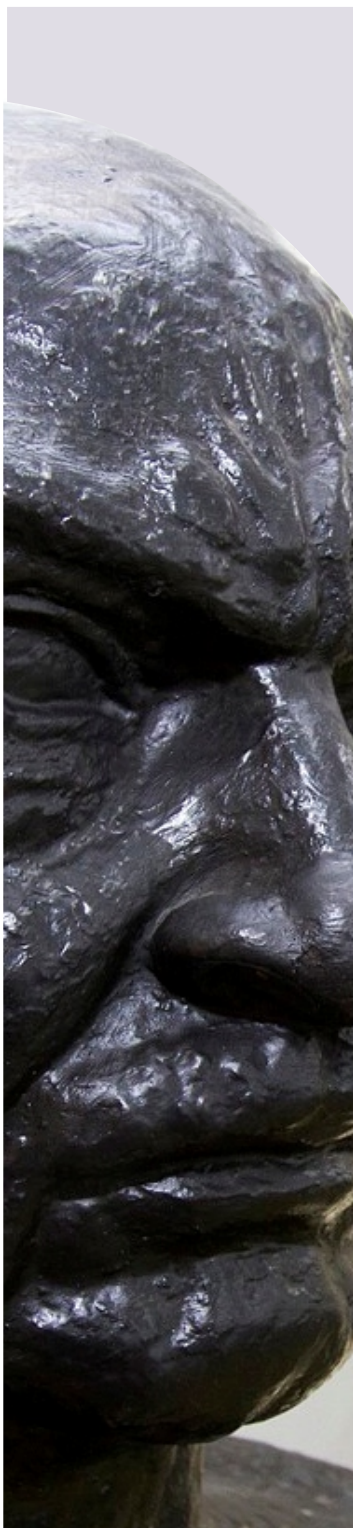
Credits



Design and Conception
www.paivajunior.com

Photosl Images USP
Marcos Santos

English Version
Vanessa de Lima Carvalho
Cindy Evellyn de A. Silva




 Comissão de
 Cooperação Nacional
 e Internacional
FE USP

