

Student guide for foreign students

Comissão de
Cooperação Nacional
e Internacional

FE USP



USP



The CCInt-FE and the School of Education at USP

The School of Education International Office (CCInt-FE) has been responsible since 2006 for the coordination of international cooperation activities in this center of research, teaching and extension.

In this regard the CCInt- FE has helped students, teachers, as well as the Dean's Office of the School of Education on issues related to the set of actions which make up the process of internationalization of this School.

Once made this commitment, the CCInt-FE members have been working on finding solutions to the problems related to the implementation and maintenance of cooperation agreements as well as the orientation of students interested in academic activities abroad.



*The March of Human Knowledge -1956
Carlos Magno. Wall Painting
in Block B of the School of Education.*

Index

- 
- 02 – USP – Campus State Capital
 - 06 – USP ifriends
 - 07 – Info Housing – USP
 - 08 – USP Student Card
 - 10 – School of Education at USP
 - 16 – Language Course (Portuguese)
 - 17 – Know the city of Sao Paulo
 - 20 – Living in Brazil (documents)



University of Sao Paulo



Campus State
Capital



Cultural & Sporting Activities



Currently USP has thirty-six Schools of research and teaching : twenty-four of them are located in Sao Paulo, a city which are the Dean's office, a center for sports (CEPEUSP, the largest in Latin America), four museums, a hospital (Universitary Hospital - HU), the Universitary Center "Maria Antonia" among other important specialized organs of the university.



The University of São Paulo also consists of 42 libraries located in the Teaching Schools in various campi. Together, they form one of the major collections librarians of Brazil, with approximately 7.052.084 units between books, thesis and journal.



The educational complex, public property of the State of São Paulo, has also a rich set of museums and important art galleries, most located in the central campus, but also distributed throughout the city of São Paulo.





USP Theater

<http://www.usp.br/tusp/>

USP Cinema “Paulo Emílio” (Cinusp)

<http://www.usp.br/cinusp/>



Symphonic Orchestra (Osusp)

<http://www.usp.br/osusp/>

USP Chamber Orchestra (Ocam)

<http://www.usp.br/ocam/>

USP Coral (Coralusp)

<http://www.usp.br/coralusp/>



Casa de Dona Yayá

<http://www.usp.br/cpc/>

University Center “Maria Antonia”

<http://www.usp.br/mariantonia/>

USP Filarmônica

<http://sites.ffclrp.usp.br/uspfilarmonica/>



Center of Sports Activities of the University of São Paulo (Cepeusp)

<http://www.cepe.usp.br/>





Museum of Human Anatomy
www.icb.usp.br/museu

Museum of Veterinary Anatomy
<http://mav.fmvz.usp.br/>



Museum of Archaeology and Ethnology
<http://www.mae.usp.br>

Museum of Contemporary Art
<http://www.mac.usp.br>

Museum of Science
<http://www.usp.br/mc/>



Museum of Geosciences
<http://www.igc.usp.br/museu>

Paulista Museum
<http://www.mp.usp.br/>

Oceanographic Museum
<http://www.io.usp.br/>



Zoology Museum
<http://www.mz.usp.br/>



USP *iFriends*

USP iFriends is a voluntary program established by the USP International Office and has the intention to integrate foreign students at USP community.

A volunteer undergraduate student (USP iFriend) will choose one foreign student and conduct it.

When someone become your USP Friend, you will receive an email containing the information and contacts from that student for you to start a conversation. After enrolling in the program, also join in to our Facebook group USP iFriends.

Activities of the USP Friend:

- Reception at the airport
- Helping in the search for accommodation
- Helping in the document regularization
- Academic orientation
- Helping with Portuguese language

If you are an exchange student and want part of the program, contact us at email ifriends@usp.br or via Facebook.

www.facebook.com/usp.ifriends.





Info Housing USP

USP doesn't offer accommodation for foreign students. So, we have some suggestions from foreign students:

Temporary:

www.sampahostel.com.br

<http://limetimehostels.com>

<http://girassolhostel.wix.com/hostel>

For the whole semester:

<http://studiospiragibe.com.br/home.php>

Groups on Facebook:

Pensionato Antiga Igreja

Pensionato Flor de Pitanga

Repúblicas da USP

Dividir Apê e Classificados USP





USP Card

USP offers for free to the foreign students the USP Card. This facility ensures the students access to all the benefits offered to undergraduate and graduate students of the University of São Paulo.

Foreign students arriving at the University of Sao Paulo receives from CCInt-FE the USP Card which offers among many benefits access to:

Libraries

Center of Sports Activities

Cinema USP

Academic Museums

University restaurants

Student support room (Pro-aluno room)

Free Transportation inside Campus (BUSP)

Wi-Fi (USPnet)

You also can get 50% discount in theaters, cinemas, shows, etc.



USP card facilities

The University Restaurant

The foreign student may buy meals credits with your USP card next to the Central Restaurant, known as "Bandeirão".

Breakfast:

from 7 am to 8.30 am R\$ 0.60.

Lunch:

from 11am to 14:15 - R\$ 1.90

Dinner:

from 17:30 to 19:45 - R\$ 1.90

Address: Rua do Anfiteatro, 295

Phone: 3091 3285

More information:

www.usp.br/coseas/

Student suport room – (Pro-aluno room)

Students from USP, including foreigners, can use at Pró-Aluno Room where there are available for free computers with internet and printers. Every undergraduate student must register at Student Section of the School of Education to obtain a password that will allow they access the computers and print 50 pages per month.

Student Bus Ticket

After receiving the USP card, the foreign student may request his own ticket to get 50% discount on the rates of public transport in the city of São Paulo. To purchase this ticket it must have the RNE (National Registry of Foreigners) and the CPF (Individual Registration).

To order your Ticket USP head to the school sector in COSEAS Pass-USP and request your form.

Address: Rua do Anfiteatro, 295 – Cidade Universitária. Phone: 3091 3581.

USP Bus Ticket (BUSP)

Every student has the right to get USP Bus Ticket. With this card the student can move freely inside the campus and go to the Butantã Metro Station. All international students at USP will receive the BUSP card with no cost.

Wi-Fi (USPnet)

Wireless USPnet project aims to make further progress in the current structure of USPnet in order to provide wireless access network from various points around the campus of USP. Firstly, to access the student just enter with your USP numbe and fulfill a formulary on the website by a computer

www.vpn.usp.br

School of Education



Academic
Struture

Courses and Disciplines of FEUSP

FE-USP

The School of Education (FE) offers undergraduate and graduate courses (stricto sensu). The research modalities are: culture, organization and education, teaching, teaching theories and school practices, special education, teaching math and science, state, society and education, philosophy of education, history of education and historiography, language and education, psychology and education and sociology of education.

For the undergraduate the FE offers Pedagogy course and pedagogic disciplines to the undergraduate courses from across the University of Sao Paulo.

PEDAGOGIA

The disciplines which composes the curriculum of Pedagogy presents the philosophical, historical, educational and methodological, economical, political and administrative foundations to understanding of school education, its institutions and its social agents. The total workload of the Pedagogy course is 3,300 hours with ideal duration of 9 semesters and maximum of 18 semesters.

Disciplines:

Mandatory: www.fe.usp.br/wp-content/uploads/obrigatorias.pdf

Optional: www.fe.usp.br/wp-content/uploads/optativas-2.pdf

Optional: www.fe.usp.br/wp-content/uploads/optativas.pdf

TEACHING DEGREE

For the Teaching Degree, the FE offers disciplines organized into three blocks:

Introduction to Educational Studies

Theoretical Foundations of Education

Teaching methods of:

Portuguese, French, English, German, Latin, Oriental Languages, Italian, Spanish, Greek, History, Social Sciences, Geography, Philosophy, Physics, Mathematics, Psychology, Chemistry, Biological Sciences, Physical Education, Geology, Linguistics and Geosciences and Environmental Education [one discipline by subject].

The classes are taught in Portuguese, except for class teaching degree course in French, English and Spanish that are taught in these respective languages.

Disciplines:

www.fe.usp.br/wp-content/uploads/lic.pdf



Curricular Treinee (for undergraduate students)

Teachers Training Program

If the foreign student chooses a discipline that has an obligatory academic internship, can get the support from the educator of this program for doing the internship in a public school in São Paulo.

FEUSP School of Education (EAFEUSP)

Despite the academic internship in a public school, the student can do the internship at EAFEUSP, according to the submission deadline and the approval of them.

Cultural Exchanges and Internationalization of EAFEUSP

The objective of this activity is possibillitate the cultural experiences exchanges and between the EAFEUSP





Currently the students from FE have at least 17 research laboratories and 04 study centers that are dedicated to topics such as: Pedagogical Materials, Teaching of Sciences Education, Reading and Creative Expression, Teaching of Chemistry and Educational Technologies, Art-Education & Culture, Policy and Scholar Administration, etc.





Laboratory of Toys and Pedagogical Materials - LABRIMP

www.labrimp.fe.usp.br/

Laboratory of Biological Sciences Teaching

<http://www3.fe.usp.br/secoes/inst/novo/laboratorios/bio.asp>

Laboratory of Reading and Creative Expression - LALEC

www2.fe.usp.br/~lalec/

Laboratory of Research in Chemistry Teaching and Educational Technologies - LAPEQ

www.lapeq.fe.usp.br/

Laboratory of Mathematics – LABMAT

www2.fe.usp.br/~labmat/

Laboratory of Teaching and Physics Research – LAPEF

www.lapef.fe.usp.br/

Didactic Laboratory of Special Education – LADESP

www.fe.usp.br

Museum of Education and Toy - MEB

www.meb.fe.usp.br

Center for Studies and Research in Public Education Policies - CEPPE

www.fe.usp.br

Know more Groups and Laboratories at:

www.fe.usp.br

Services and FE- USP Information



The School of Education, over the years, which the focus is offer technology, qualified information through its offices to the students (as CCIInt -FE, which assists students interested in participating in the internationalization process); Culture and Extension Committee, which focus is in organizing courses and events; CEPEL wthat teaches language course; Student Division, where the student can find information on undergraduate and graduate courses and spaces designed to support and complement the research and the training of its own students.

The FEUSP currently has a library, a computer room with computers, internet, printers and scanners equipped (Pró-Aluno Room); Copy Machine Store, and Wi-Fi (USPNet and Eduroam) available in all School environments.



CEPEL (Center of Studies and Reseach in the Teaching of Languages)

Taught by teachers hired by the School of Education at USP , the short courses "minicursos" of CEPEL languages offered free of charge , including the service of Portuguese language to foreign students, they are coordinated and supervised by a team of teachers Methodology of languages teaching. CEPEL offers linguistic Portuguese Language Tutoring (Room 11 - Block B).

inco@fe.usp.br

www.fe.usp.br/cepe



The **INCO** program has for over twenty years free English courses for USP undergraduate students. In all, six levels are offered that lead the student level A1 to level B1 according to the Common European Framework Reference table.



Interdepartamental Language Center

Interdepartamental Language Center of the School of Philosophy, Language and Literature and Human Sciences (FFLCH) also offers paid courses of Portuguese for foreigners (taught by specialized teachers). This Language Centre has increasingly expanded its educational proposal and currently offers several language courses. www.clinguas.fflch.usp.br

*Get to know
the city of
Sao Paulo*



Mobility
and Tourism



Tourism & Culture in São Paulo

Currently with a population about 12 million citizens, 70 nationalities and more than 15 million tourists annually, São Paulo is a global city.

Diverse and plural, the city is generating trends and styles with options for leisure, business and entertainment to the most diverse lifestyles and behavior: intellectuals, athletes, religious, businesspersons, artists, etc.

Faced with the enormous range of cultural and tourist facilities, we selected some of channels of information that can help foreign students interested in exploring and experiencing the city of Sao Paulo.

Get to know the city of São Paulo

www.cidadedesapaulo.com

Turism in Sao Paulo

www.turismoemsaopaulo.com

Sesc Turism

www.sescsp.org.br/turismo



*Einstein riding a bicycle.
Eduardo Cobra. Wall Painting*

Transports in Sao Paulo

Single Ticket

Single Ticket of SPTRANS (Transport in São Paulo) you will pay R \$ 5.45 to travel between subway/metro, train and bus (with this amount charged on the ticket you can take bus 4 times and one for subway or train in 3 hours).

Bus

About 15,000 buses serve the city: more than 70 % are accessible for many of them running through corridors (exclusive for bus). There are also intercity buses with different rates. The São Paulo Metro subway operates everyday.

Subway

The São Paulo Subway operates from Monday to Monday, including holidays, and serves a great part of the city.

Learn more about it at:

www.metro.sp.gov.br

www.emtu.sp.gov.br

www.sptrans.com.br

BUS Station

There are three BUS Station in São Paulo. They all have easy access via bus and subway. More information at:

www.socicam.com.br

Bicycle

Sao Paulo is increasingly easy to get around by bicycle, as the city has expanded its cycling structure. You can rent a bike in one of the 164 public stations. Learn how to rent a bike at:

www.bikesampa.com.br

www.ciclosampa.com.br

Trains

Known as CPTM train (the Metropolitan Trains Company) connects São Paulo to 30 cities surroundings area. The rate per trip is R\$ 3.50 and is integrated with the subway/metro.

More information

www.cptm.sp.gov.br

Taxis

Taxis in São Paulo are identified as white vehicles. A panel in red in the car indicates the amount to be paid by rate each trip.

www.tarifadetaxi.com/sao-paulo

Guarulhos Airport

Aiport Bus Service:

From Tatuapé Metro or Barra Funda Metro to Guarulhos Airport

www.emtu.sp.gov.br

Rates: from R\$ 5,55 to 45,50



Stay in Brazil



Documents



Documents required to foreign students

BRAZILIAN VISA FOR STUDENT

The interested student must make the visa request in the Brazilian embassies or consulates abroad before their arrival in Brazil. Find the Brazilian consulate in your country at the Itamaraty site:

www.portalconsular.mre.gov.br

CPF

The Registration of Individuals is a mandatory document for the foreign student to open a bank account or to apply for the student bus ticket (with 50% discount on tickets). This document may be requested in Brazilian embassies or consulates. This way is the fastest one. For requesting it, access the site below, fulfill the formulary on and deliver it in the designated places:

<http://www.receita.fazenda.gov.br/Aplicacoes/Atcta/>

[CpfEstrangeiro/fcpf.asp](http://www.receita.fazenda.gov.br/Aplicacoes/Atcta/CpfEstrangeiro/fcpf.asp)

If you want to request the CPF in Brazil, you need to pay an issuance which costs R\$ 5.70. Go to the indicated banks (Banco do Brasil or Caixa Econômica Federal) and fulfill the formulary for acquiring the document in. After this, go to the closest Receita Federal with the solicited documents. For this procedure, find more information on the site below:

<http://idg.receita.fazenda.gov.br/contato/uni>



Documents required to foreign students

RNE

The National Registry of Foreigners is a mandatory document for foreign students in the country. After arriving in Sao Paulo, the foreign student must go to the Federal Police to reach the issue of the document (Deadline: 90 days after entering the country).

The student must schedule a visit and pay two rates. The total is R\$ 204,77

More information at:
<http://www.pf.gov.br/servicos-pf/imigracao/cedula-de-identidade-de-estrangeiro/visto-consular>

ÍNDICE DE/AS

- A. Av. da Universidade
B. Av. Prof. Lineu Prestes
C. Av. Prof. Luciano Guaberto
D. Av. Prof. Ernesto de M. Leme
E. Av. Prof. Almeida Prado
F. Av. Prof. Melo Moraes
G. Rua do Infleto
H. Av. da Retoria
I. Av. Prof. Lúcio Rodrigues
J. Rua do Lago
K. Rua do Matão
L. Av. Corifeu de Azevedo Marques
M. Av. Escola Politécnica
N. Av. Marginal Pinheiros
O. Rua Veneza
P. Rua Francisco dos Santos

Cidade Universitária - Capital



Mapa do Transporte Metropolitano

Metropolitan Transport Network



Legenda Legend

	Linha 1 - Azul <i>Line 1-Blue</i>	METRÔ
	Linha 2 - Verde <i>Line 2-Green</i>	METRÔ
	Linha 3 - Vermelha <i>Line 3-Red</i>	METRÔ
	Linha 4 - Amarela <i>Line 4-Yellow</i>	VIAQUATRO
	Linha 5 - Lilás <i>Line 5-Lilac</i>	METRÔ
	Linha 7 - Rubi <i>Line 7-Ruby</i>	CPTM
	Linha 8 - Diamante <i>Line 8-Diamond</i>	CPTM
	Linha 9 - Esmeralda <i>Line 9-Emerald</i>	CPTM
	Linha 10 - Turquesa <i>Line 10-Turquoise</i>	CPTM
	Linha 11 - Coral <i>Line 11-Coral</i>	CPTM
	Linha 11 - Coral - Expresso Leste <i>Line 11-Coral - East Express</i>	CPTM
	Linha 12 - Safira <i>Line 12-Sapphire</i>	CPTM
	Linha de Ônibus Especial <i>Special Bus Line</i>	CPTM
	Expresso Turístico <i>Touristic Express</i>	CPTM
	Ponte ORCA - tarifada <i>Orca Shuttle Service</i>	EMTU
	Corredor Metropolitano de Ônibus ABD <i>ABD Metropolitan Bus Corridor</i>	EMTU
	Terminal Metropolitano de Ônibus <i>Metropolitan Bus Terminal</i>	

	Estação <i>Station</i>
	Integração - gratuita <i>Integration - Free Interchange</i>
	Integração - tarifada <i>Integration - Paid Interchange</i>
	Integração - gratuita: Horário Especial (veja no site: METRÔ/CPTM) <i>Integration - Free Interchange during off-peak hours (see website: METRÔ/CPTM)</i>
	Estações com elevador <i>Station with elevator</i>
	Terminal Rodoviário <i>Road Terminal</i>
	Bicicletário <i>Bike Parking Terminal</i>
	Paraciclos <i>Bike Attaching Post</i>
	Bicicletário com empréstimo de bicicleta <i>Bike Parking & Rental Terminal</i>
	Estacionamento de Carro Integrado <i>Integrated Car Parking</i>
	Estacionamento de Carro Integrado/ Paraciclos <i>Integrated Car Parking/ Bike Attaching Post</i>

Informações úteis Useful Information

CPTM	www.cptm.sp.gov.br	0800 055 0121
EMTU	www.emtu.sp.gov.br	0800 724 0555
METRÔ	www.metro.sp.gov.br	0800 770 7722
VIAQUATRO	www.viaquatro.com.br	0800 770 7100

Consulte no site das empresas os horários de funcionamento das estações e transferências entre linhas.
Please address the websites of the metropolitan transport companies for stations service hours and line interchange information.



GOVERNO DO ESTADO DE SÃO PAULO

Secretaria dos Transportes
Metropolitanos



(11) 3091.2067



ccint.fe@usp.br



[ccint.feusp](https://www.facebook.com/ccint.feusp)



Mon to Fri: 9AM-12 and 2PM-6



www.usp.br/internationaloffice/



Block B - Room 19



www.fe.usp.br

Av. da Universidade, 308 - Cidade Universitária
Cep.: 05508-040 - São Paulo/SP

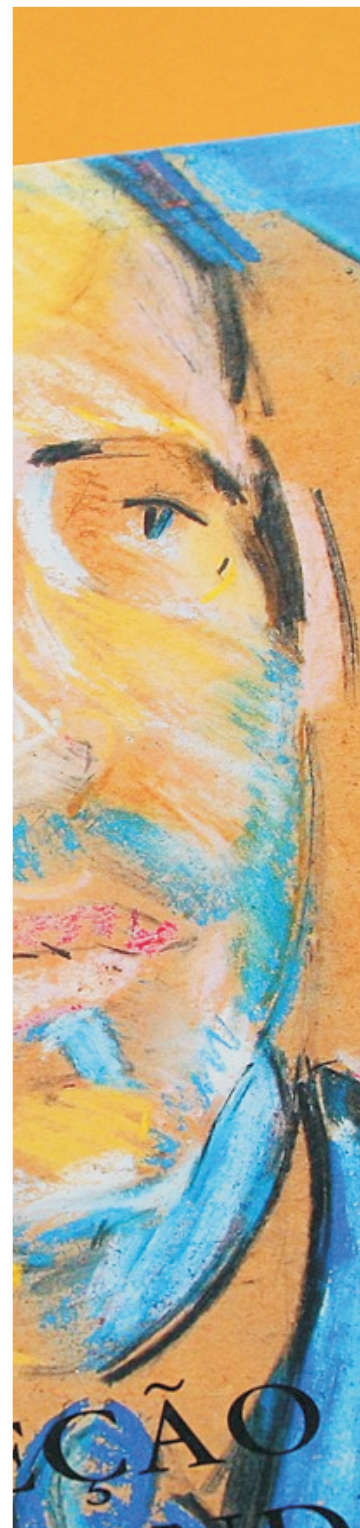
Credits



Design and Conception
www.paivajunior.com

Photosl Images USP
Marcos Santos

English Version
Vanessa de Lima Carvalho
Cindy Evellyn de A. Silva




 Comissão de
 Cooperação Nacional
 e Internacional
FE USP

